

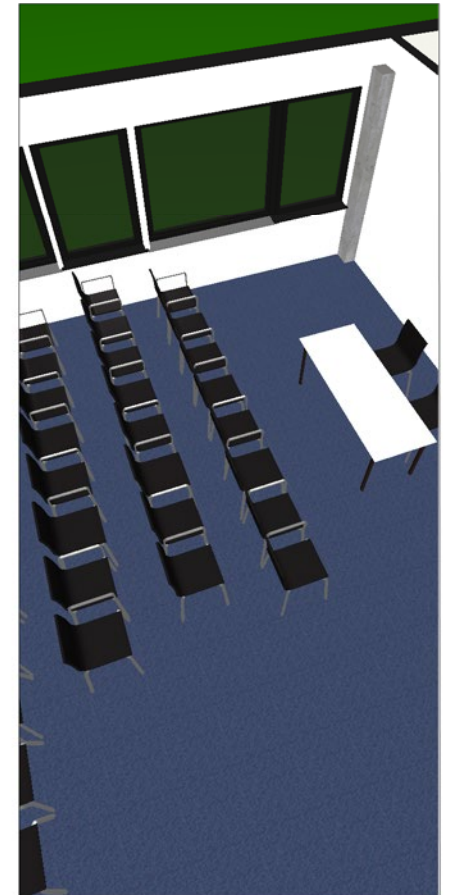
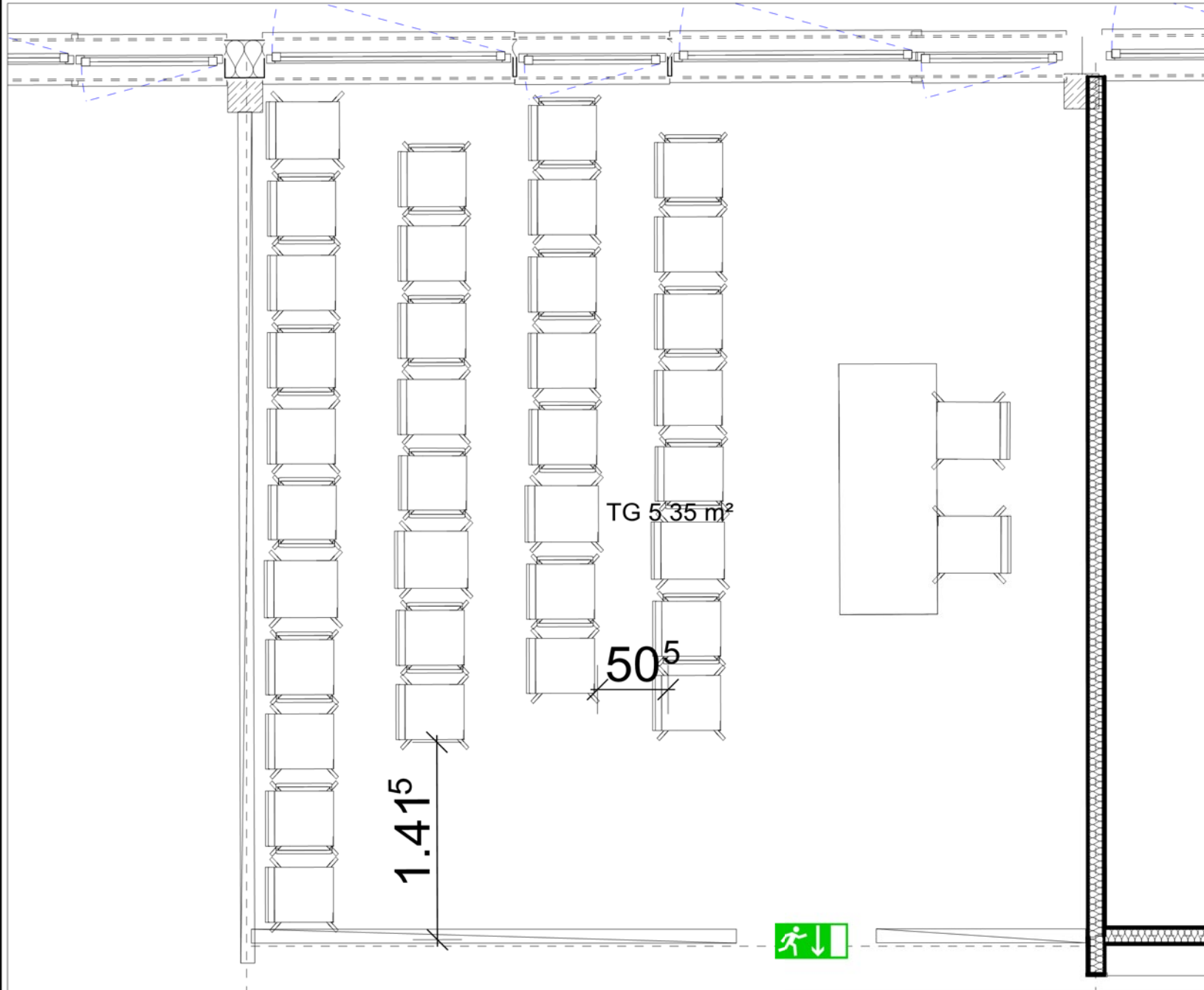
Milchwerk

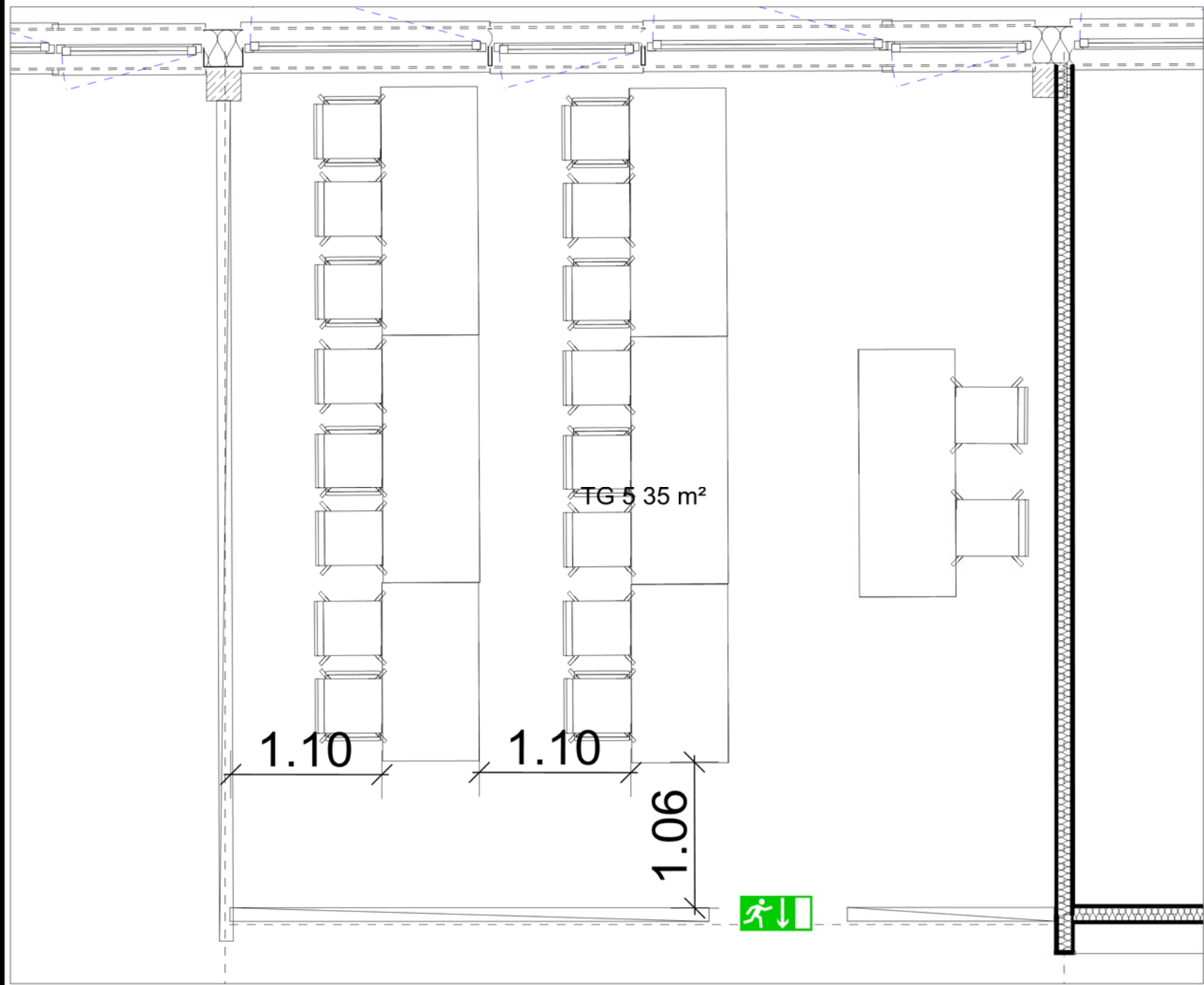
RADOLFZELL

TAGUNG : KULTUR : MESSE

Raum **TG 5**

Reihenbestuhlung
35 Pax + 2 Referenten
Zeichner: C.L.
Genehmigt:
Datum:



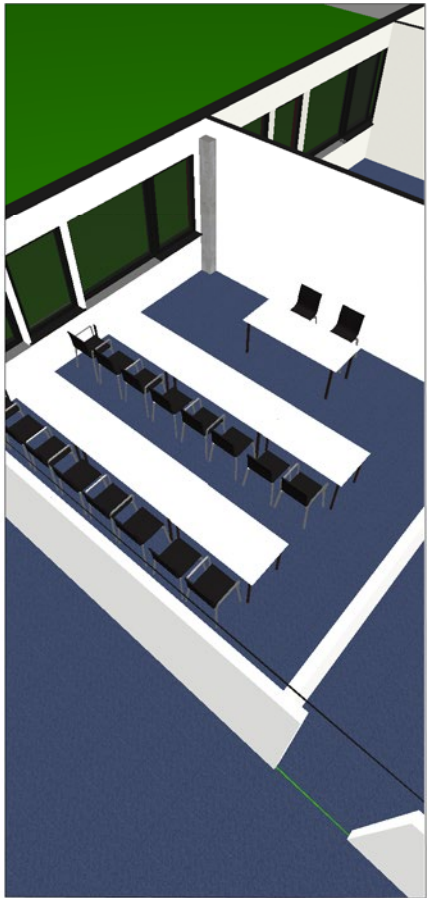


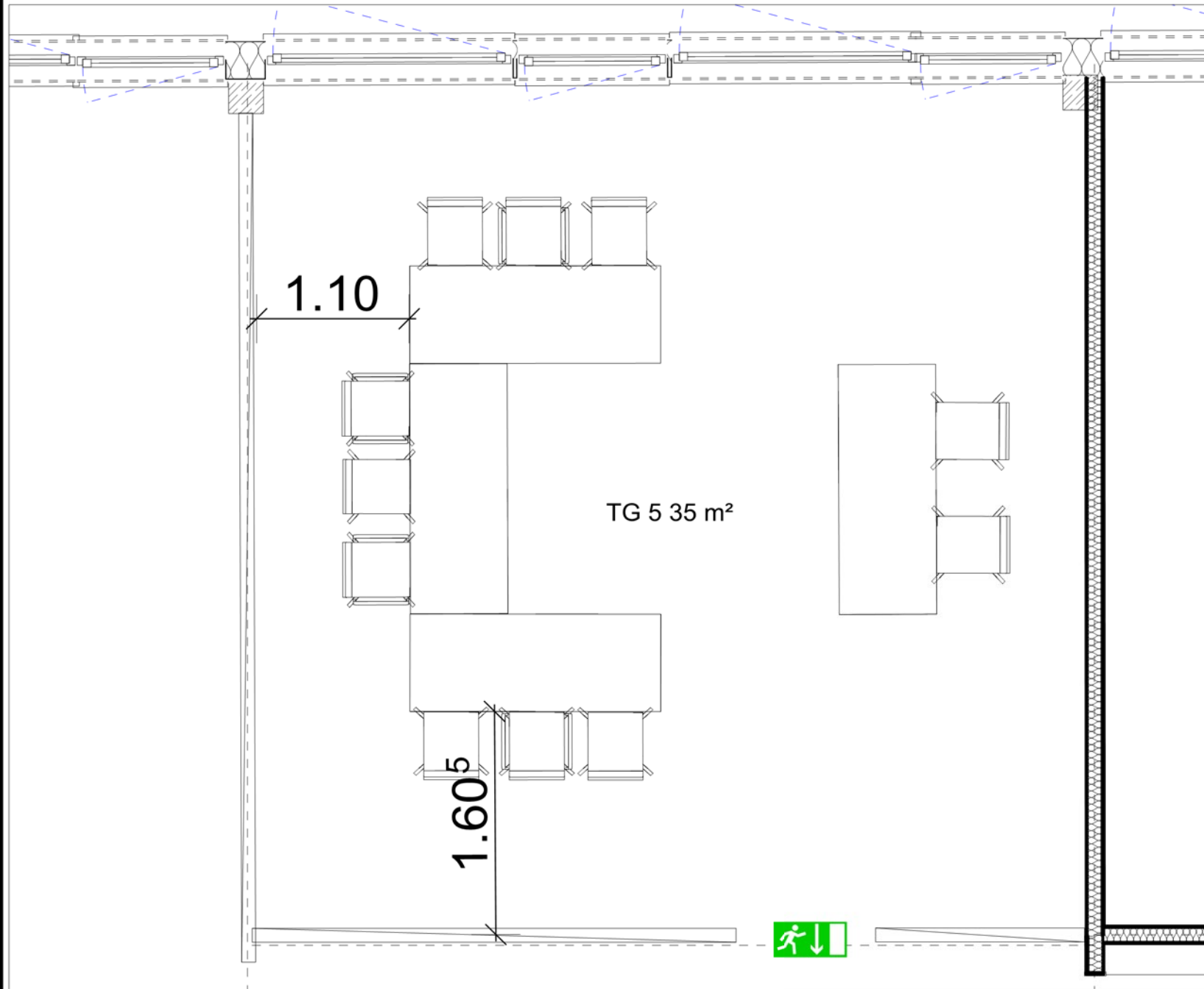
Milchwerk
 RADOLFZELL

TAGUNG : KULTUR : MESSE

Raum **TG 5**

Parlamentarisch
 16 Pax + 2 Referenten
 Zeichner: C.L.
 Genehmigt:
 Datum:





Milchwerk

RADOLFZELL

TAGUNG : KULTUR : MESSE

Raum

TG 5

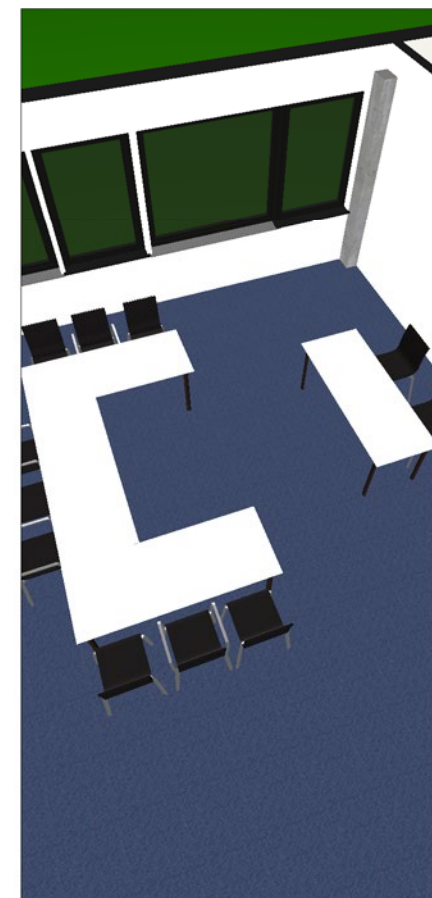
U Bestuhlung

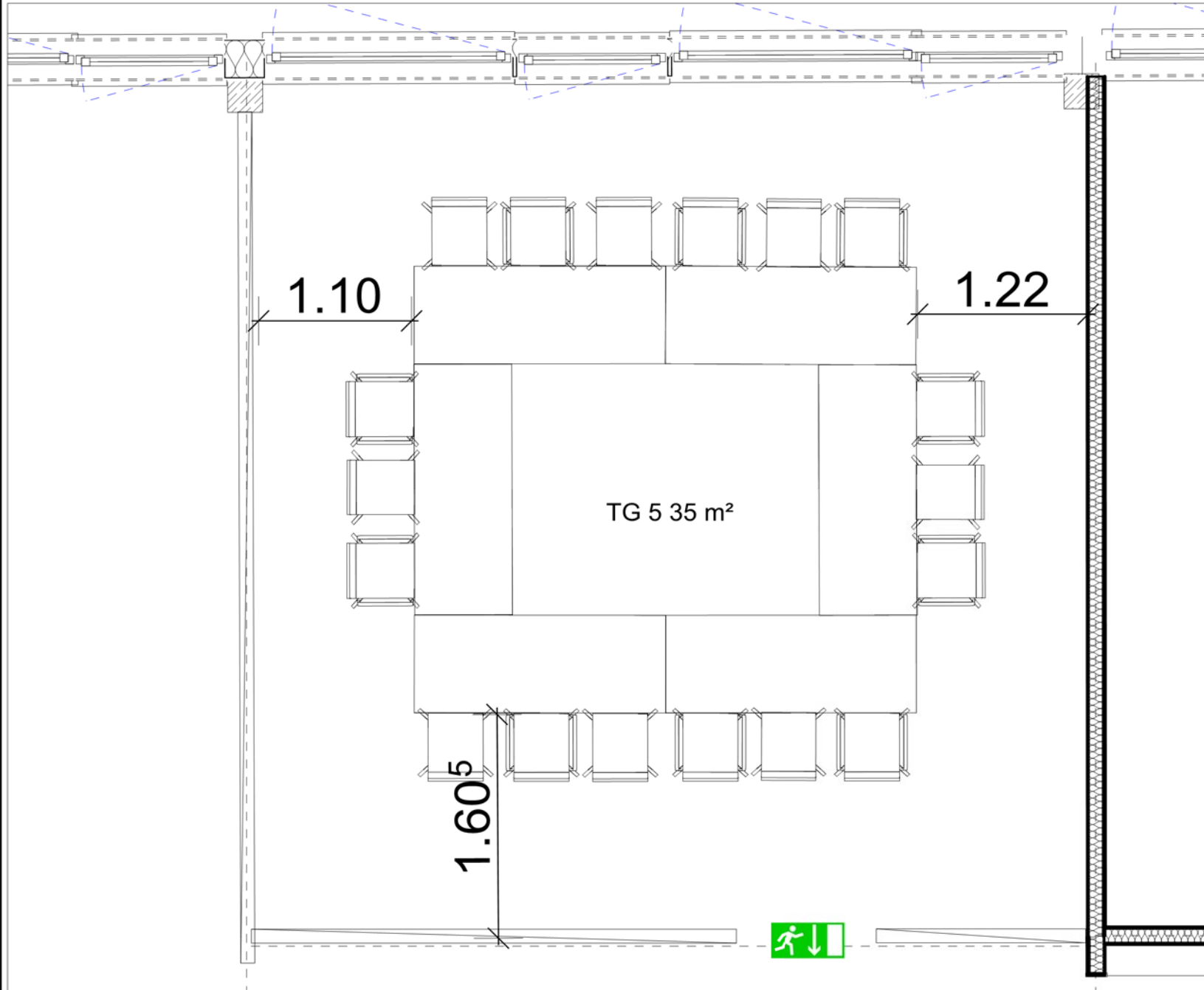
9 Pax + 2 Referenten

Zeichner: C.L.

Genehmigt:

Datum:





Milchwerk
RADOLFZELL

TAGUNG : KULTUR : MESSE

Raum **TG 5**

Carré
18 Pax
Zeichner: C.L.
Genehmigt:
Datum:

