

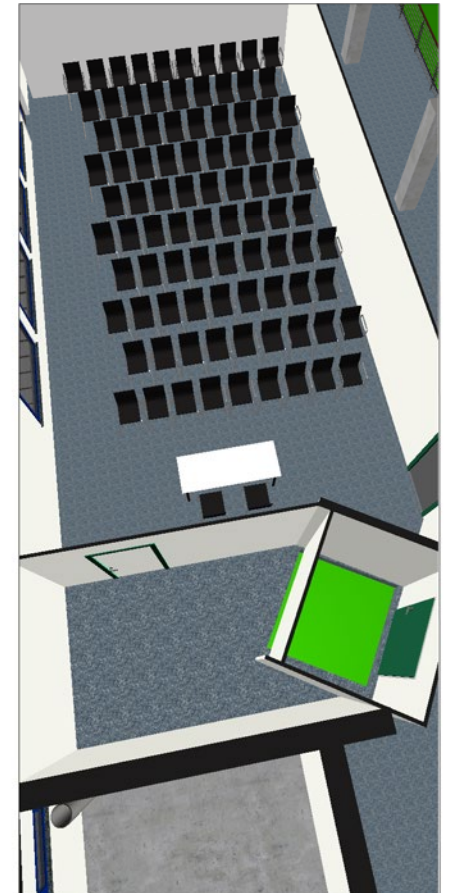
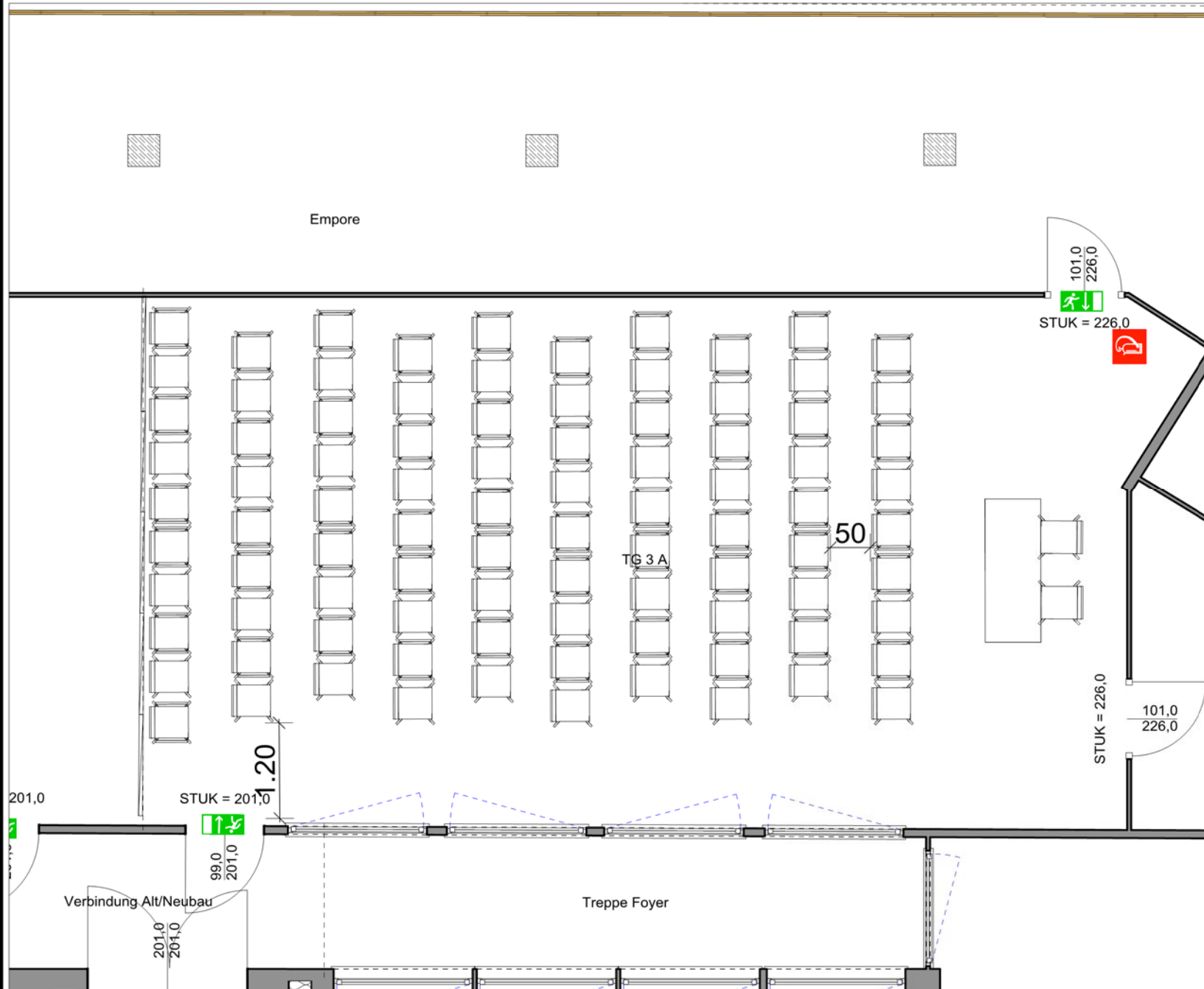
Milchwerk

RADOLFZELL

TAGUNG : KULTUR : MESSE

Raum **TG 3 a**

Reihenbestuhlung
91 Pax + 2 Referenten
Zechner: C.L.
Genehmigt:
Datum:



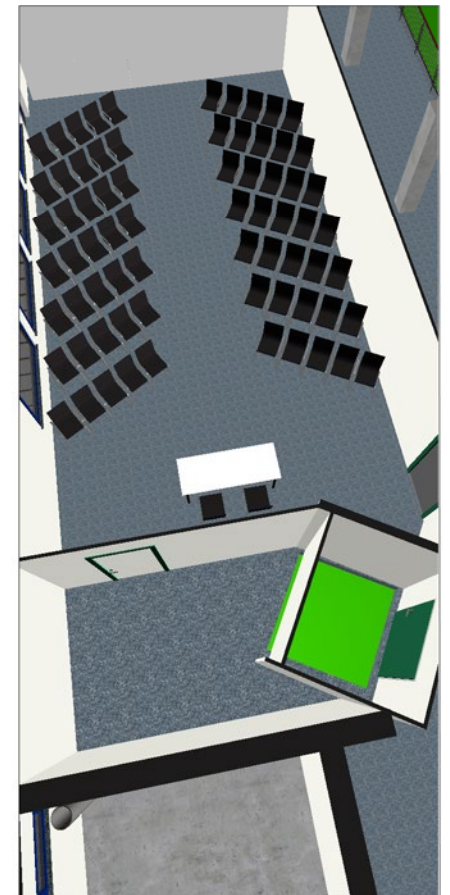
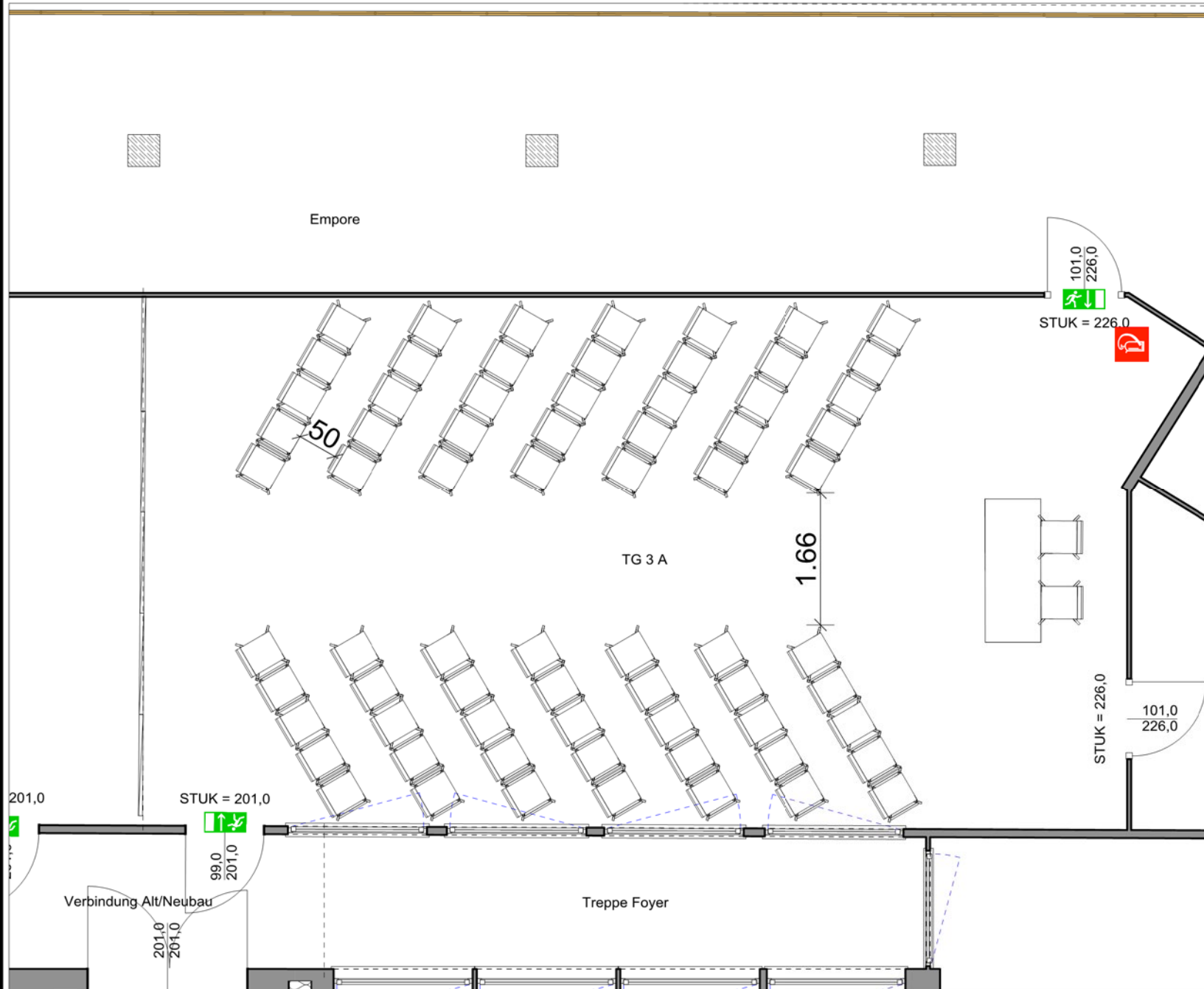
Milchwerk

RADOLFZELL

TAGUNG : KULTUR : MESSE

Raum **TG 3 a**

Reihe Fischgräten
70 Pax + 2 Referenten
Zeichner: C.L.
Genehmigt:
Datum:



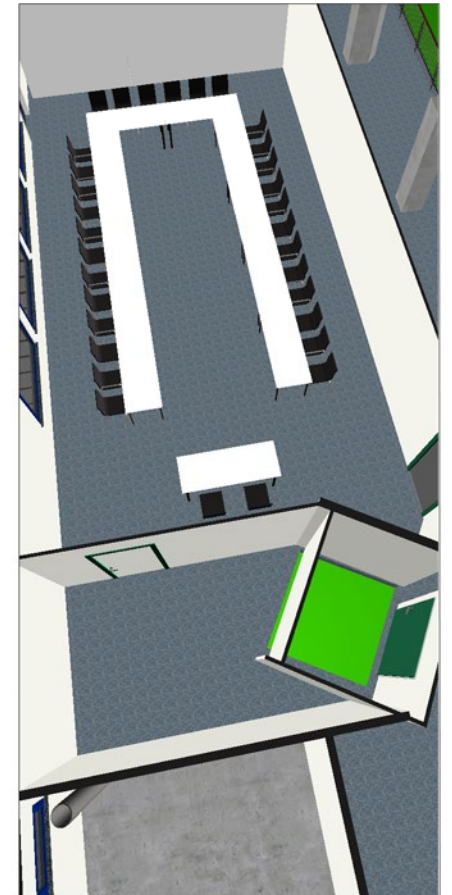
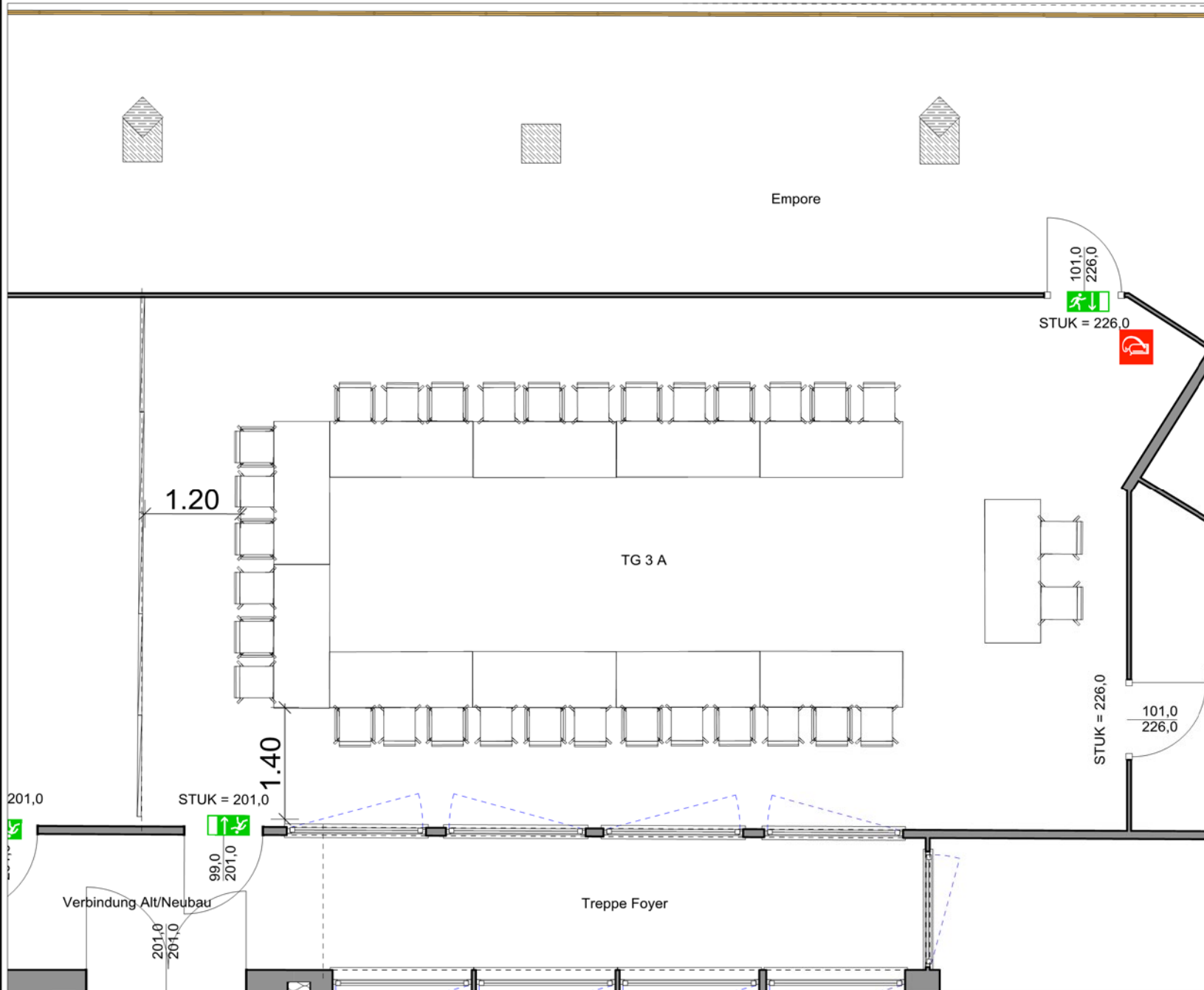
Milchwerk

RADOLFZELL

TAGUNG : KULTUR : MESSE

Raum **TG 3 a**

U Bestuhlung
30 Pax + 2 Referenten
Zeichner: C.L.
Genehmigt:
Datum:



Milchwerk

RADOLFZELL

TAGUNG : KULTUR : MESSE

Raum **TG 3 a**

Carré
36 Pax
Zeichner: C.L.
Genehmigt:
Datum:

